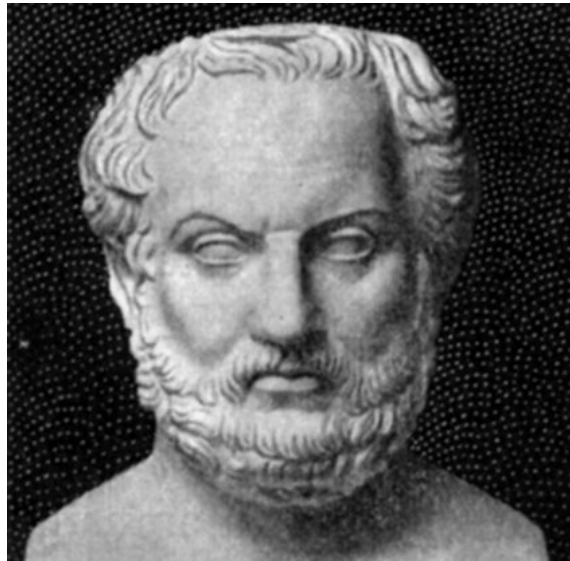


Thucydides

“A history manager for n1mmlogger”



Manual V0.51
For Thucydides V0.51

Amersfoort, April 16th 2005

Carel Mobach, PC5M

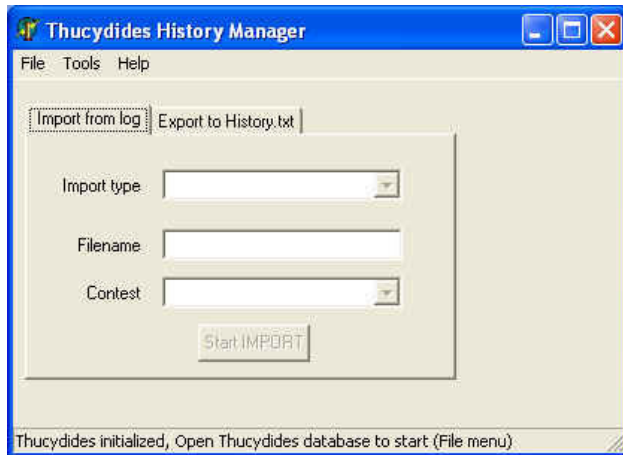
1 Table of content:

1	Table of content:	2
2	Quick start.....	3
2.1	Quick start, Import.....	3
2.2	Quick start, Export.....	4
3	Thucydides.....	5
4	Overview.....	5
4.1	Program details	5
4.2	Development.....	6
5	Features.....	6
6	PC Requirements	7
6.1	Hardware.....	7
6.2	Operating system	7
7	Installation.....	8
7.1	First time installation	8
7.2	Upgrading	8
7.3	Uninstall.....	8
8	Using Thucydides	9
8.1	Menu commands.....	9
8.1.1	File Menu commands.....	9
8.1.2	Tools menu commands.....	9
8.1.3	View menu commands.....	9
8.1.4	Help menu commands.....	9
8.2	Main form buttons.....	10
8.2.1	Import from log.....	10
8.2.2	Export to history.txt	11
9	Update algorithm	11
10	Contest specific support.....	12
Appendix A.	Thucydides database format	13
Appendix B.	History file format.....	14
Appendix C.	Mapping file.....	15
Appendix D.	List of Tables	19

2 Quick start

To get started with Thucydides unzip the thucydides.zip and execute “thucydides.exe”.

2.1 Quick start, Import



- Create a new empty history database <**File, New**> or open an existing history database <**File, Open**>.
- Select tab <**Import from log**>
- Select <**Import type**>. Data can be imported from actual logged qso's or from an existing history.txt file.
- Select <**Logger HAM database**>.
- Select <**Filename**> for selecting from which ham (logger) database you would like to gather the qso data.
- Select <**Contest**>, to select one of the active contest instances within the ham database.
- Select <**Start Import**> to start the import process.

When the program has finished the history database has been created or updated with the selected contest information. To generate a new history text file and subsequent to be loaded in n1mmlogger select the <**Export to History.txt**> tab.

2.2 Quick start, Export



- If not already the history database is open (e.g.. for importing) open an existing history database <File, Open>.
- Select tab <Export to History.txt>
- Select <Export for contest>. Select the contest for which a history text file should be generated..
- Select <Target History file> for selecting the filename of the to be generated text file.
- Select <Start Export> to start the export process.

When the program has finished a text file has been generated which is optimized for the selected contest and holds all available data from the history database. This history text file can be loaded in n1mmlogger (see the n1mmlogger manual for help)

Thucydides uses a separate (MSAccess) database to store all history information. This history database is organized such, that it can store different kind of information for every call sign. Information can be i.e. state, arrl section, name but also Dutch provinces of fieldday section. For a field description see appendix A.

The history database can be filled and updated with actual contest logging information (from n1mmlogger) or with text files. Text file format should be comma delimited rows of data, equal to the history.txt format used by n1mmlogger. See appendix B for a description. Filling and updating the history database is called “import”. Note that the n1mmlogger database is never altered; it is used for read only purposes.

In order to generate an optimized history.txt file to be used by n1mmlogger, Thucydides has an “export” function. With this function the Thucydides database is read, needed fields are extracted and a history.txt (or other filename) is generated.

An import role in both processes (import and export) has an MSExcel based mapping file. The content of this file will hold the mapping to be used between the input and output data and the history database. This mapping is contest specific. For experienced users this mapping file can be altered in order to add additional contests or change the default behavior. For a detailed description of the mapping process see appendix C.

4.2 Development

Thucydides has been developed using Delphi6. Database components ADODB on the OLE Jet 4.1 engine and optimized for Windows 32bit operating system. During development great help has been provided by Thomas, PA1M for verification and insight information of the internal n1mmlogger contest implementation.

5 Features

Thucydides provides the following features

- Creation of one separate history database holding all contest qso data
- Creation of contest specific and optimized history files
- Importing of existing history text files
- Hints and status information
- Database view of the history database
- Supported contests are all contests supported by n1mmlogger

6 PC Requirements

6.1 Hardware

Requirements are moderate, a normal PC with VGA screen is sufficient.

6.2 Operating system

Thucydides has been developed and tested on Windows XP, but will run on W98 and NT.

7 Installation

7.1 First time installation

Thucydides can be downloaded as a self contained .zip file. Files in the .zip are

- thucydides.exe, the actual program file
- thucydides.ico, icon used in the about box
- schema.ini, file containing schema information to be used to import the history file format.
- thucydides_mdb.template. Template used by Thucydides for generating a new history database.
- mapping.xls. MSEXcel file with mapping information

Installation: Unzip and install all files in one single directory. For ease of use a shortcut can be created on the desktop.

No registry settings or hidden files are used and or created during installation.

7.2 Upgrading

New versions of Thucydides will be distributed via new zip archives. Unzip and overwrite the current files.

7.3 Uninstall

Un-installation by deleting all Thucydides files.

8 Using Thucydides

8.1 Menu commands

8.1.1 File Menu commands

- **New History database:** A new empty history database is generated. A form will be shown to specify a filename and directory location. In case already another history database has been active, this active database will be closed and the new history database will be opened.
- **Open History database:** Select the history database to be used. Note that it is possible to use many different history databases, however to gain maximum use of building one “big” database most of the time only one history database is used. At this moment it is not possible to merge data from different history databases.
- **Close History database:** The history database open will be closed and compacted to reduce size.
- **Close database and Exit:** The history database will be closed, compacted to reduce size and the Thucydides is terminated.

8.1.2 Tools menu commands

- **Empty history database:** The current opened history database will be completely emptied. This is irreversible! This command can be handy if one is trying the program and would like to start with a new empty history database. During normal use this command will be seldom used.

8.1.3 View menu commands

- **History database:** A view of the content of the opened history database is given. It is not possible to change, add or delete data.

8.1.4 Help menu commands

- **About..:** An about box will be shown with application information

8.2 Main form buttons

Main form buttons are placed in two tabs. One for importing (from n1mmlogger or history text file toward the history database) and one for exporting (from the history database to a history text file).

8.2.1 Import from log

- Import type: A selection can be made from which source you would like to import. This can be a n1mmlogger database or a history text file
- File name: The selected n1mmlogger database filename or the selected history text file filename is given.
- Contest: Specify the contest to be imported.
 - In case of a n1mm logger database as import type: Only the actual contests available in the n1mm logger database file can be selected and a mapping exists for this contest.
 - In case of a history text file as import type: The different contests available in the mapping file can be selected.
- Import: The specified contest information is read and the history database updated.

At the bottom of the window status information is displayed.

During importing from a history text file a temporary file will be created holding a copy of the selected history file. This temporary file (Thucydides_hist_temp.txt) will be deleted when the application is being exited.

Before the actual import starts a backup of the current history database is created for safety reasons. It will be created in the same directory as the history database and will have an equal filename with the extension .bup added. Note that only one backup will be created, this file will be rewritten during each import session. It is advised to check the actual history database after every import (using the View menu). In case of the need to revert to the history file backup: Close the history database, and use the windows filesystem (Explorer) to copy the "history database".bup to a different filename without the .bup extension (should end in .mdb). This database can now be used (File, Open history database).

8.2.2 Export to history.txt

- Export for contest: Select the contest for which a text file will be generated. A selection can be made for the contests as specified in the mapping file.
- Target history file: Select the filename and location of the history file to be generated. To be able to read the generated in n1mm logger the history file extension should be .txt
- Export: The history database will be read and according the mapping for the specified contest a history text file will be written. Note that only calls will be present in this text file for which the data is not empty. E.g. in case of generating a history text file for the cq160 contest only those calls will be present which have some data in the state or name field. Calls/Stations for which this data is empty will not be written to the history text file. In this way the most efficient history text file is generated without any overhead, subsequent importing and use of this history in n1mm logger will be the fastest.

At the bottom of the window status information is displayed.

9 Update algorithm

- If “call” from log file exists already in the history then all (non empty) log file fields will be copied to the corresponding fields in the new history overriding the present values.
- Exceptions are the “locator1” and “locator2” fields. In the case that the log file “Grid square” is different than locator1 and different than locator2, in the updated history file “locator1” will be copied to “locator2” and the log file “grid square” will be copied to “locator1”.

Example:

In log	Grid=JO22OJ	
In loaded history	Locator1=JO22OK	Locator2=JO33II
New history	Locator1=JO22OJ	Locator2=JO22OK

10 Contest specific support

At this moment the following contests are supported, new contest will be added on a regular basis. Reason for not supporting all contests are a.o. that the contest is not using static data (e.g. only serial numbers) or data that will be retrieved dynamic (zone information). Also in n1mmLogger not all possible contests are supported yet for history data retrieval.

Thucydides will check if the contest is supported, if not it will signal it to the user.

Supported Contests	
ARIDX	NAQPCW
ARRL10M	NAQPSSB
ARRLDXCW	NAQPRTTY
ARRLDXSSB	NRAUCW
ARRLRTTY	NRAUSSB
ARRLVHFJAN	PABEKERSSB
ARRLVHFJUN	PABEKERCW
ARRLVHFSEP	PACC
CNCW	SPDX
CQ160CW	SPDXRTTY
CQ160SSB	SPRINTCW
DARC10M	SPRINTSSB
DDFM50	SPINTRTTY
DX	SSCW
DXSATELLIT	SSSSB
EUHFC	STEWPERRY
EUSCW	TARAGRID
EUSSSB	TARAPSK
FD	UKSMG
FOCCW	VHFDX
IARU	VHFREG1
MACRORRTY	XMAS

Table 1: Supported Contest

Appendix A. Thucydides database format

Field name	Description of use
Call	Call sign
Data1	Name
Data2	Grid1 (locator)
Data3	Grid2 (locator)
Data4	ARRL Section
Data5	State*
Data6	CK
Data7	Birth date
Data8	Dutch region number
Data9	License (EUHFC)
Data10	Fieldday section
Data11	FOC nr
Data12	Zone nr
Data13	Baltic state
Data14	Reserved for further use
Data15	Reserved for further use
Data16	Reserved for further use
Data17	Reserved for further use
Data18	Reserved for further use
Data19	Reserved for further use
Data20 – Data30	Reserved for further use
Update	Date of last update

Table 2: History database format

* State : will be used for

USA/VE : States

PA: Dutch provinces

F: French departments

I: Italian provinces

DL: DOK nr's

SP: Polish provinces

Multiple use of the state field is possible due to the different countries. E.g. an USA/VE station will never be in a French department)

Appendix B. History file format

In contrast with the file format as described in the n1mmlogger manual the history format for Thucydides is more restricted.

- File format: [call sign], [name], [locator1],[locator2],[state],[sect],[ck],[birthdates]
- [call sign] is mandatory, other fields are non mandatory
- No empty lines or lines starting with # as remarks are not supported

Field nr.	History.txt use
1	Call
2	Name
3	Grid1
4	Grid2
5	Section
6	State
7	CK
8	Birth date

Table 3: History text file format

Appendix C. Mapping file

The mapping file provides the information to map the fields used (internally) by n1mmlogger database, the history text files and the history database.

Mapping is needed because it is not obvious what kind of data is stored in what field of the n1mmlogger database of the fields of the history.txt file.

By using an external Excel file it is possible to alter the mapping very easily. Of course a great deal of caution should be taken! A wrong mapping can ruin the complete history database. When changing the mapping and importing all files should be backup-ed before, especially the history database used.

Separate mapping is in place for import and export.

- Import mapping for
 - N1mmlogger database towards history database
 - History text files toward the history database
- Export mapping for
 - History database towards history text files

Mappings are organized in one MSEXcel file (mapping.xls) by two worksheets: ImportMapping and ExportMapping.

Import mapping for n1mmlogger towards history database

N1mmlogger uses the following fields for storing contest information (only the relevant fields in this context are mentioned)

- Call
- CK
- Sect
- Exchange1
- Name
- Gridsquare
- Nr

Some fields are obvious (e.g. Call) others are used depending on the actual contest. Here the mapping will come into play.

The import mapping will describe for every contest which n1mmlogger field will be mapped to which history database field.

Example: for CQ160, n1mmlogger will store the callsign information in “Call”, the country abbreviation in “exchange1” and for USA/VE calls the abbreviated state information in “Sect”. Import mapping for this contest will map accordingly “Call” to “Call”, “Sect” to “State” (data5) and “Name” to “Name” (data1)

Import mapping for history text files towards history database

As will be clear in the explanation of the export mapping it is not obvious what kind of information the different history text fields will hold. For instance, if you would like to import history data used during the PABEKER or Fieldday contest the “state” field (field nr 3) will hold a province number or a fieldday section. In case we would like to import this data we need to know a) what contest the history text reflects and b) depending on this information where to store this information in the history database.

Export mapping for history database towards history text files

N1mmlogger will use the history text file to pre-fill data (e.g. exchange) upon a matched callsign. However, depending on the contest, different information should be present in the history text file at the same “field” position. Example: For the Dutch contests PABEKER and PACC, n1mmlogger will use the “state” field (field nr. 2) as the source data field. Unfortunately this data is different (for PABEKER contest it is a region number and for the PACC contest it will be a province abbreviation). Same is true for many other contests: Different information for the same call sign at the same history text field position. Only way out is to provide some kind of mapping (for every specific contest) to map the different history database fields to the, to be generated, history text file.

ImportMapping description:

	Field	History database field name
	Contest_general	General contest name
	Contest	Specific contest, need to match the n1mm naming of the contest
	History	1 = history supported by n1mm, 0 = history not supported by n1mm
Fields corresponding to n1mm database	Call	Specify which Thucydides database field to be used (normally = call)
	CK	Specify which Thucydides database field to be used
	Sect	Specify which Thucydides database field to be used
	Exchange1	Specify which Thucydides database field to be used
	Name	Specify which Thucydides database field to be used
	Gridsquare	Specify which Thucydides database field to be used
	Nr	Specify which Thucydides database field to be used
Fields corresponding to history.txt	Field1	Specify which Thucydides database field to be used when importing from history.txt
	Field2	Specify which Thucydides database field to be used when importing from history.txt
	Field3	Specify which Thucydides database field to be used when importing from history.txt
	Field4	Specify which Thucydides database field to be used when importing from history.txt
	Field5	Specify which Thucydides database field to be used when importing from history.txt
	Field6	Specify which Thucydides database field to be used when importing from history.txt
	Field7	Specify which Thucydides database field to be used when importing from history.txt
	Field8	Specify which Thucydides database field to be used when importing from history.txt

Table 4: Import mapping description

ExportMapping description:

	Field	history database use
	Contest_general	General contest name
	Contest	Specific contest, need to match the n1mm naming of the contest
	History	1 = history supported by n1mm, 0 = history not supported by n1mm
Fields corresponding to history.txt	Field1	Specify which Thucydides database field to be used (normally the call)
	Field2	Specify which Thucydides database field to be used
	Field3	Specify which Thucydides database field to be used
	Field4	Specify which Thucydides database field to be used
	Field5	Specify which Thucydides database field to be used
	Field6	Specify which Thucydides database field to be used
	Field7	Specify which Thucydides database field to be used
	Field8	Specify which Thucydides database field to be used

Table 5: Export mapping description

Appendix D. List of Tables

Table 1: Supported Contest.....	12
Table 2: History database format.....	13
Table 3: History text file format	14
Table 4: Import mapping description.....	17
Table 5: Export mapping description.....	18