



ORARI DAERAH 8 SULAWESI SELATAN

THE MAKASSAR DIGIMODE CLUB – YB8ZD



Packet Radio



Sulwan Dase-YB8EIP

Oleh:

Sulwan Dase – YB8EIP

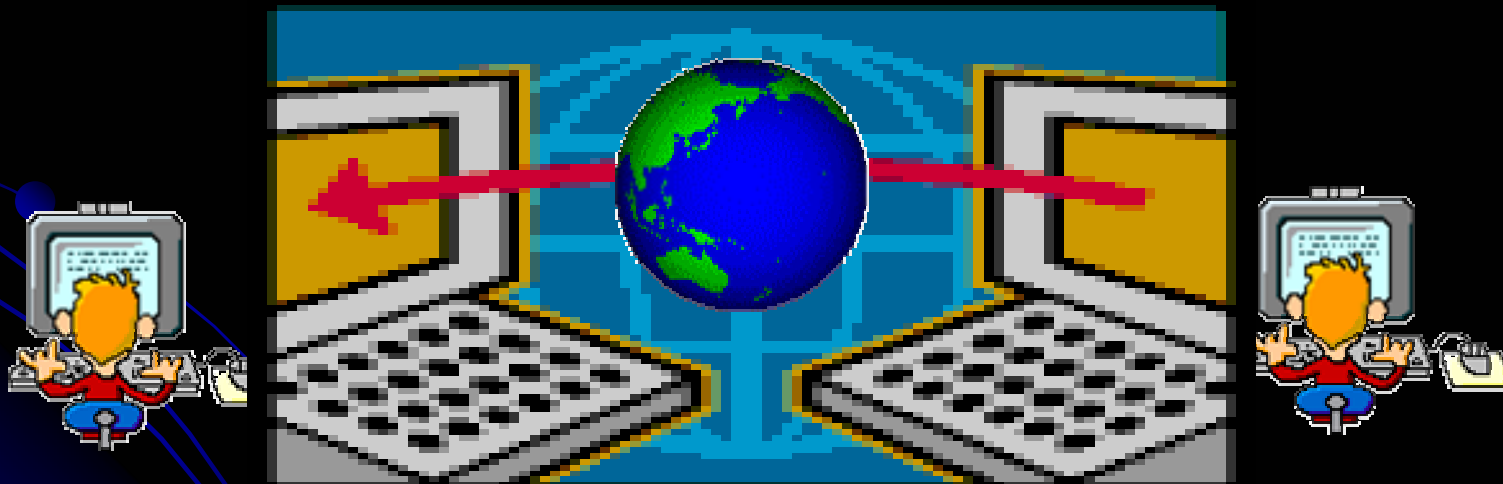
The Makassar Digimode Club - YB8ZD



ORARI DAERAH 8 SULAWESI SELATAN

THE MAKASSAR DIGIMODE CLUB – YB8ZD

Merambah Dunia Dengan Paket Radio





Apa Itu Packet Radio?

- Packet radio adalah salah satu teknik komunikasi digital. Informasi berupa teks. Satu karakter = 7 bit data
- Naskah teks digital yang akan dikirim, dipenggal menjadi paket-paket data sebelum ditransmisi.
- Sebelum ditransmisi melalui radio transceiver, tiap bit data di modulasi terlebih dahulu dengan modulasi digital AFSK (Audio Frequency Shift Keying).
- Pilihan band frekuensi disesuaikan dengan laju transmisi. Pada band HF = 300 baud, VHF = 1200 Baud, dan UHF < 1200 baud.
- Prinsip yang sama digunakan pada GPRS (General Packet Radio Service) telepon selular (GSM & CDMA)

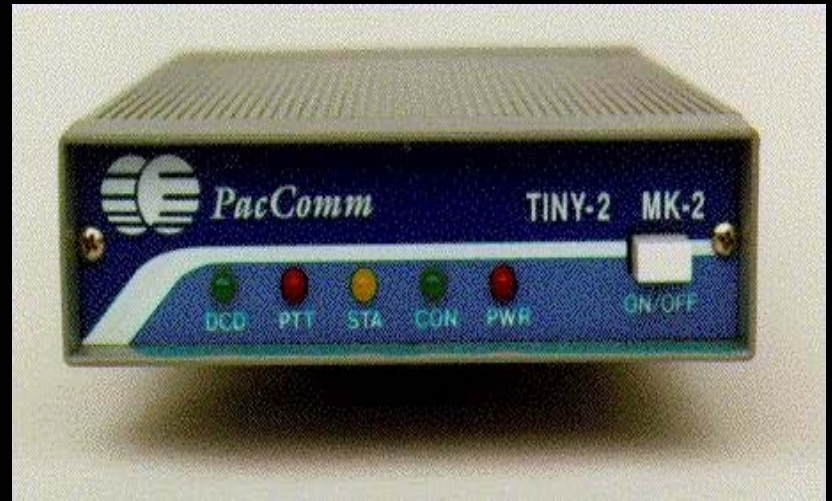


Apa Manfaat Packet Radio?

- Membaca Bulletin Internasional
- Mengirim surat elektronik (e-Mail)
- Mengirim Dokumen
- Ngobrol (Cahtting) dengan sesama Amateur Radio dilokal maupun Internasional dalam **Worldwide Conference**
- Dapat digunakan mengirim Informasi Cuaca, berita bencana dan lokasi bencana dengan APRS (*Automatic Position Reporting System*)
- Bila anda rajin menulis ke Bulletin, maka anda akan dikenal diseluruh Dunia oleh AR lain.

Bagaimana Memulai?

1. Bila anda menggunakan Komputer versi 486 atau pentium-1, dibutuhkan modem Packet Radio yang dapat bekerja sesuai band frekuensi: HF (300 baud), VHF (1200 baud) dan UHF (diatas 1200 baud).



Contoh Modem Packet radio



Konstruksi Station Packet Radio

Makassar Digimode Club



Komputer/Laptop



Solusi Murah Modem Packet Radio

- 1. Bagi yang menggunakan komputer P3 atau P4 (Pentium-4), solusi termurah adalah menggunakan Soundcard komputer sebagai pengganti modem.**
- 2. Dibutuhkan software tambahan untuk men-drive soundcard agar berfungsi sebagai modem, seperti software :
AGW-WinPac, MixW, Flexnet atau AGW-UISS dll.**



Packet Radio Dengan Soundcard

Modem



Dulu

Interface + Soundcard + Software

=

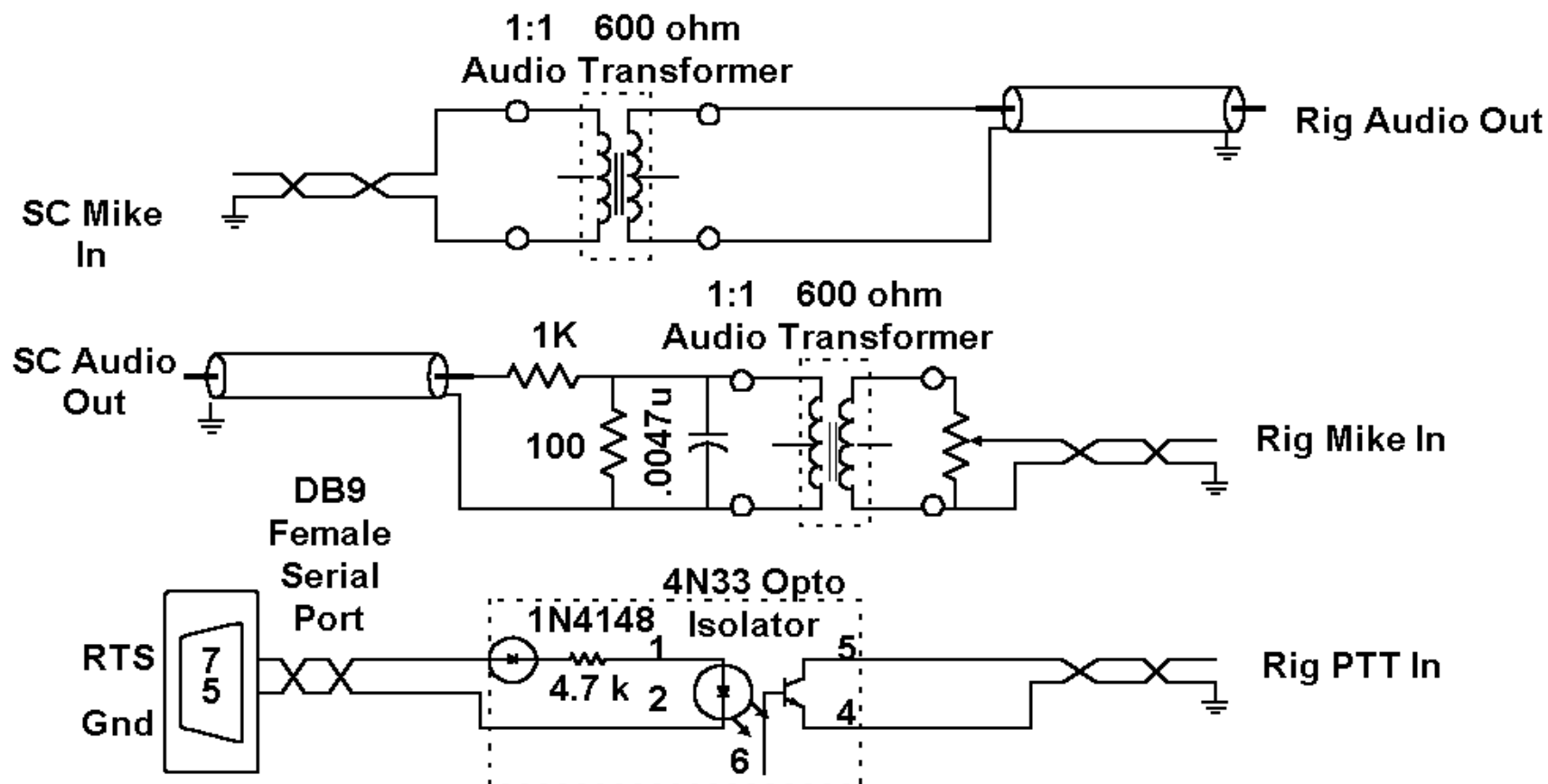


Sekarang

Interface

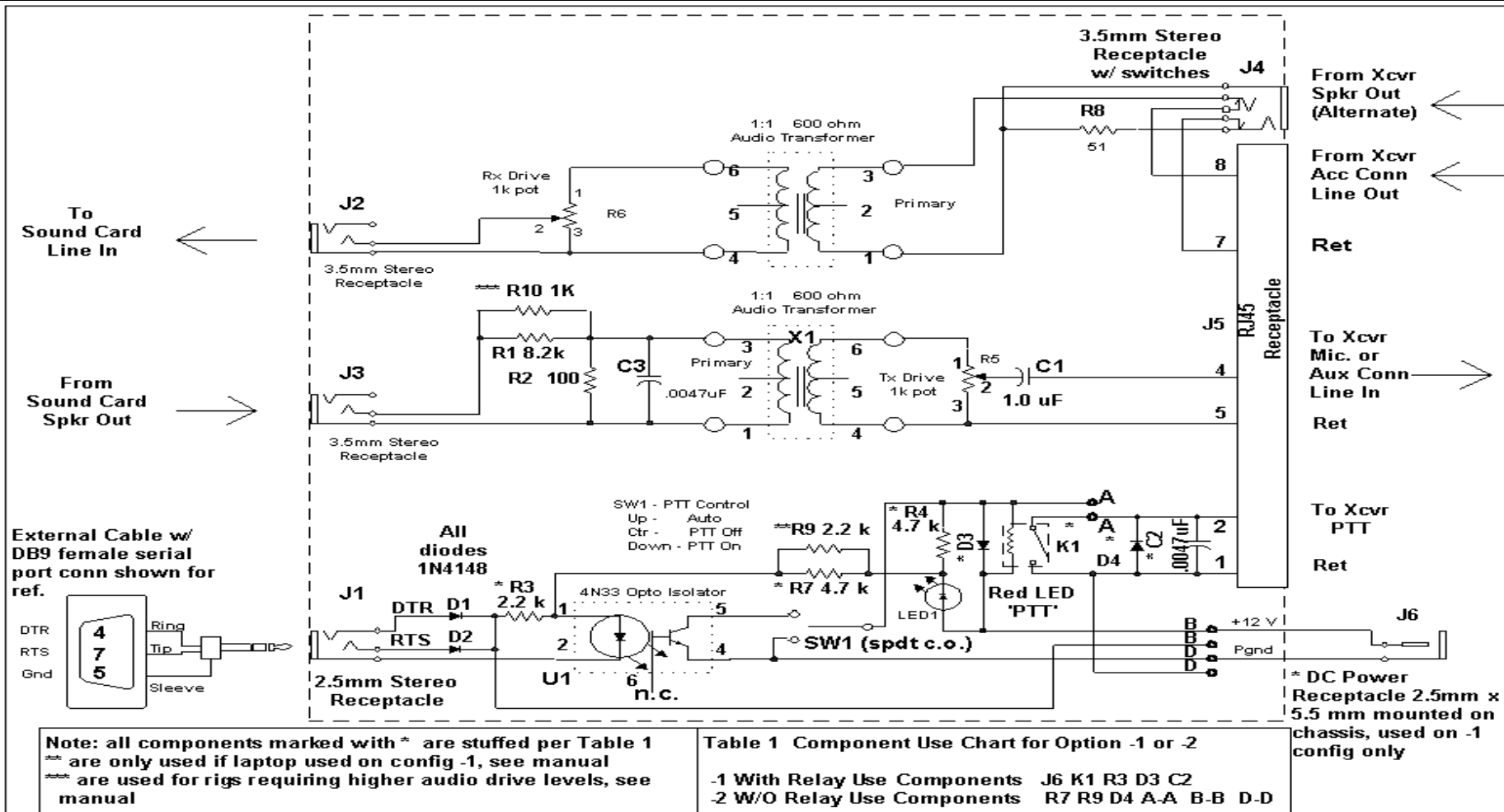


Interface Soundcard





Interface Soundcard





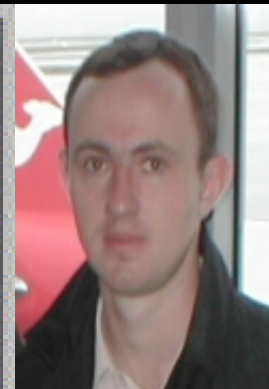
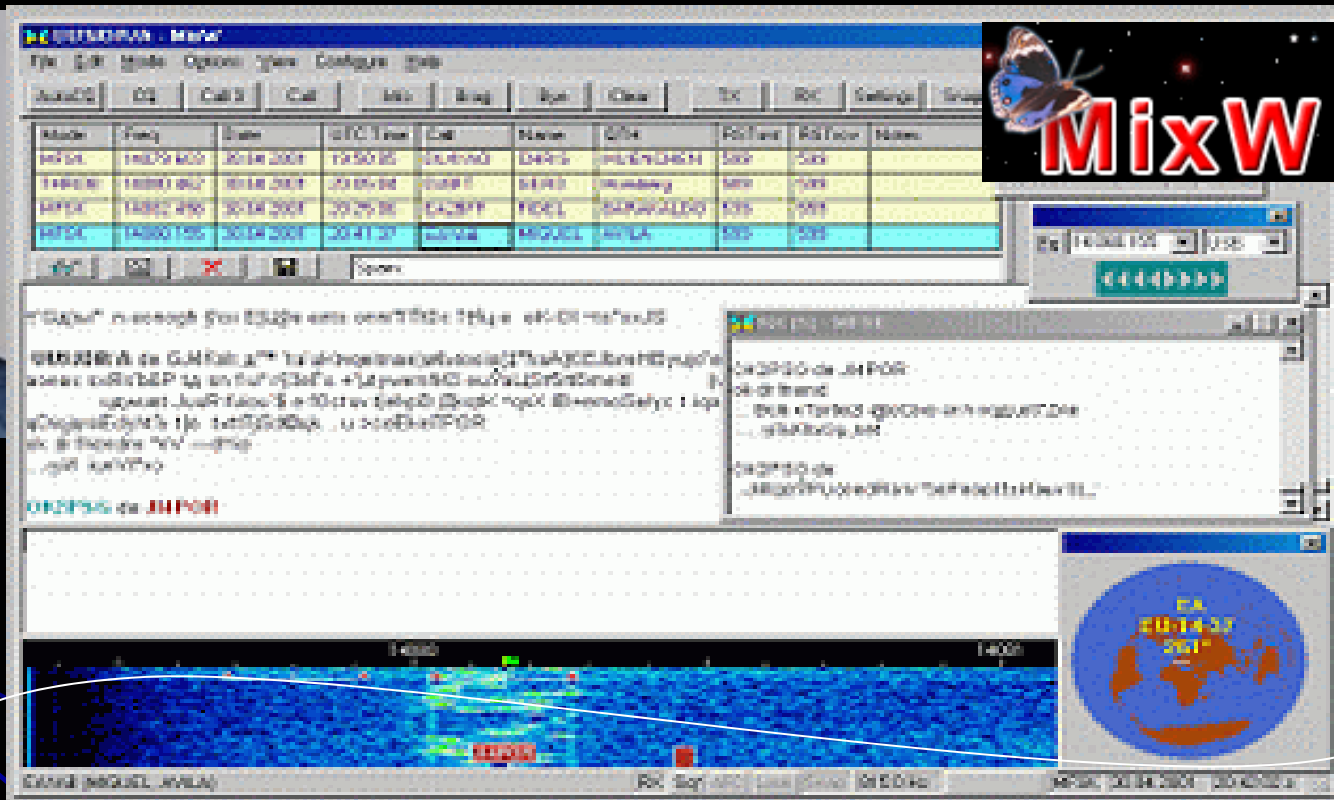
Packet Radio Dengan MixW



Software MixW versi Demo bisa di download di internet



IVAN



IGOR

Interface



MDC: Packet Radio



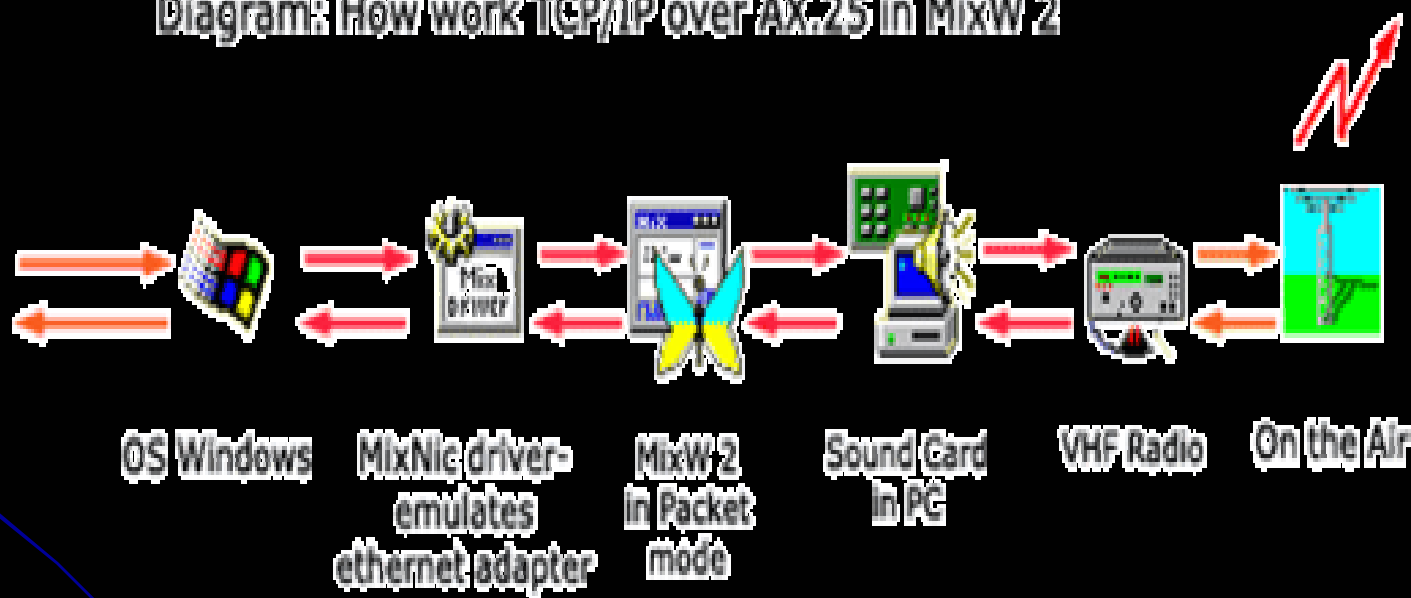
Pembuat Software **MixW(are)**

Sulwan Dase-YB8EIP



Prinsip Komunikasi Packet Radio

Diagram: How work TCP/IP over AX.25 in MixW 2





Setting Program MixW

YB8EIP - Current log: MixW2.log - MixW

File Edit Mode Options View Configure Help

AutoCQ

SSB
AM
FM
CW
BPSK31
QPSK31
FSK31
RTTY
✓ Packet
Pactor
Amtor
MFSK
Throb
MT63
Hellschreiber
Fax
SSTV
OLIVIA

Inverted
Mode settings...
Character encoding for this mode...
Output amplitude for this mode...
Connect...
Disconnect

Additional modes
Additional modes settings...
TNC modes
TNC modes settings...

INFO Bye Clear TX RX << >>

Call	Name	QTH	RST_Sen
YB4IR	IMAM	PALEMBANG	599
JA1SCW	Setoru	Tokyo-PM95pk	599
JT1DN		on37kt	599

Eq: 144.149.000

0 copy % 100

0 | s/n | 60

RST: 599 0 | i | m | -40

Click Tab Mode, pilih Packet pada pilihan mode.

1000 2000 3000 4000 5000

Disconnected DCD AFC Lock Snap 1700.0 Hz 1200 baud PACKET 07/16/2007 15:25:01 z

start E:\WORKSHOP_M... Packet Radio.ppt Sejarah Amateu R... YB8EIP - Current lo... 10:25 PM



Setting MODE

YB8EIP - Current log: MixW2.log - MixW

File Edit Mode Options View Configure Help

AutoCQ

SSB
AM
FM
CW
BPSK31
QPSK31
FSK31
RTTY
Packet
Pactor
AmTOR
MFSK
Throb
MT63
Hellschreiber
Fax
SSTV
OLIVIA

Inverted
Mode settings...
Character encoding for this mode...
Output amplitude for this mode...
Connect...
Disconnect

Additional modes
Additional modes settings...
TNC modes
TNC modes settings...

INFO Bye Clear TX RX << >>

Call	Name	QTH	RST_Sen
YB4IR	IMAM	PALEMBANG	599
JA1SCW	Setoru	Tokyo-PM95pk	599
JT1DN		on37kt	599
			599

Eq: 144.149.000

copy % 100

s/n 60

RST: 599

1000 2000 3000 4000 5000

Disconnected DCD AFC Lock Snap 1700.0 Hz 1200 baud PACKET 07/16/2007 15:28:33 z

start E:\WORKSHOP_M... Packet Radio.ppt Sejarah Amateur R... YB8EIP - Current lo... 10:28 PM



Setting MODE: General

YB8EIP - Current log: MixW2.log - MixW

File Edit Mode Options View Configure Help

AutoCQ CQ QRZ? Call CALL2 INFO Bye Clear TX RX << >>

QSO	Mode	Freq	Date	UTC	Call	Name	QTH	RST_Sen
42	BPSK31	14070.500	05/12/2007	16:46:23	YB4IR	IMAM	PALEMBANG	599
43	BPSK31	7039.490	06/09/2007	11:43:08	JA1SCW	Setoru	Tokyo-PM95pk	599
44	BPSK31	14070.700	06/15/2007	11:45:50	JT1DN		on37kt	599
45	PACKET	144149.000	07/16/2007	15:32:45				599

Eq: 144.149.000

0 copy % 100

0 | s/n | 60

RST: 599 0 | i | m | -40

AX.25 settings

General Modem Parameters Beacon/Unproto Monitor

Incoming MyCalls: NOCALL

Digi

My Digi's calls:

☐ Enable digipeating

TCP/IP call: NOCALL ☒ Suppress broadcasts

☐ Emulate KISS TNC on TNC emulation port

OK Cancel

Disconnected DCD AFC Lock Snap 1700.0 Hz 1200 baud PACKET 07/16/2007 15:32:45 z

start E:\WORKSHOP_M... Packet Radio.ppt Sejarah Amateur R... YB8EIP - Current lo... 10:32 PM



Setting Modem:

HF = 300 baud; VHF = 1200 Baud

YB8EIP - Current log: MixW2.log - MixW

File Edit Mode Options View Configure Help

AutoCQ CQ QRZ? Call CALL2 INFO Bye Clear TX RX << >>

Eq: 144.149.000

QSO	Mode	Freq	Date	UTC	Call	Name	QTH	RST_Sen
42	BPSK31	14070.500	05/12/2007	16:46:23	YB4IR	IMAM	PALEMBANG	599
43	BPSK31	7039.490	06/09/2007	11:43:08	JA1SCW	Setoru	Tokyo-PM95pk	599
44	BPSK31	14070.700	06/15/2007	11:45:50	JT1DN		on37kt	599
45	PACKET	144149.001	07/16/2007	15:33:12				599

AX.25 settings

General Modem Parameters Beacon/Unproto Monitor

VHF 1200 baud (Standard, 1200/2200 Hz)

VHF frequency response correction (high frequency raise)

Input, dB 0 Output, dB 0

DCD threshold

OK Cancel

Pilihan kecepatan transmisi data

Disconnected DCD AFC Lock Snap 1700.0 Hz 1200 baud PACKET 07/16/2007 15:33:12 z

start E:\WORKSHOP_M... Packet Radio.ppt Sejarah Amateur R... YB8EIP - Current lo... 10:33 PM



Setting Parameter

YB8EIP - Current log: MixW2.log - MixW

File Edit Mode Options View Configure Help

AutoCQ CQ QRZ? Call CALL2 INFO Bye Clear TX RX << >>

Eq: 144.149.000

QSO	Mode	Freq	Date	UTC	Call	Name	QTH	RST_Sen
42	BPSK31	14070.500	05/12/2007	16:46:23	YB4IR	IMAM	PALEMBANG	599
43	BPSK31	7039.490	06/09/2007	11:43:08	JA1SCW	Setoru	Tokyo-PM95pk	599
44	BPSK31	14070.700	06/15/2007	11:45:50	JT1DN		on37kt	599
45	PACKET	144149.000	07/16/2007	15:38:19				599

YB8ZD>ID>UI,C,F0:
MailBOX & GATEWAY - UNHAS MAIL
VHF>MAIL>UI,C,F0:
Mail for: YC8DG ORARI YB8EW YC8DG
YB8ZD>ID>UI,C,F0:
MailBOX & GATEWAY - UNHAS MAIL
YB8ZD>ID>UI,C,F0:
MailBOX & GATEWAY - UNHAS MAIL
VHF>MAIL>UI,C,F0:
Mail for: YC8DG ORARI YB8EW YC8DG
YB8ZD>ID>UI,C,F0:
MailBOX & GATEWAY - UNHAS MAIL

AX.25 settings

General Modem Parameters Beacon/Unproto Monitor

MaxFrame 7 Retry time, s 10

PacLen 100 Retry limit 15

TxDelay, ms 300 Resp delay, ms 0

TxTail, ms 0 Idle poll time, s 60

Persist 63 Red. time, s 300

SlotTime, ms 10 ☐ Enable full duplex

OK Cancel

Parameter Packet yang diatur

Disconnected DCD* AFC Lock Snap 1700.0 Hz 1200 baud PACKET 07/16/2007 15:38:19 z



Setting Configure: Personal Data

YB8EIP - Current log: MixW2.log - MixW

File Edit Mode Options View Configure Help

AutoCQ CQ QRZ? < >

QSO Mode Freq Date

42	BPSK31	14070.500	05/12
43	BPSK31	7039.490	06/09
44	BPSK31	14070.700	06/15
45	PACKET	144149.000	07/16

QTH RST_Sen

PALEMBANG	599
toru	599
ono	599
	599

Eq: 144.149.000

0 copy % 100

0 | s/n | 60

RST: 599 0 | i | m | -40

Personal Data...
Interface language...
Default macros...
Macros for this mode...
Macros for this contest...
✓ Merge macros
Text colors...
Fonts
Disable CAT
TRCVR CAT/PTT...
LPT port settings...
Secondary PTT port
FSK port
WinKey port
TNC emulation...
Rotor
Disable sound device
Sound device settings...
Output volume...
Input volume...
TNC settings...
Markers...
Callbook...
✓ Use WAE country list

Memulai setting
Personal Data

Personal data adalah data pribadi
anda, spt callsign, alamat Locator dll

Disconnected DCD AFC Lock Snap 1700.0 Hz 1200 baud PACKET 07/16/2007 15:40:11 z

start E:\WORKSHOP_M... Packet Radio.ppt Sejarah Amateur R... YB8EIP - Current lo... 10:40 PM



Contoh Tampilan Personal Data

YB8EIP - Current log: MixW2.log - MixW

File Edit Mode Options View Configure Help

AutoCQ CQ QRZ? Call CALL2 INFO Bye Clear TX RX << >>

Eq: 144.149.000



QSO	Mode	Freq	Date	UTC	Call	Name	QTH	RST_Sen
42	BPSK31	14070.500	05/12/2007	16:46:23	YB4IR	IMAM	PALEMBANG	599
43	BPSK31	7039.490	06/09/2007	11:43:08	JA1SCW	Setoru	Tokyo-PM95pk	599
44	BPSK31	14070.700	06/15/2007	11:45:50	JT1DN		on37kt	599
45	PACKET	144149.000	07/16/2007	15:41:40				599



RST: 599

0 copy % 100

0 | s/n | 60

0 | i | m | -40

YB8ZD>ID>UI,C,F0:
MailBOX & GATEWAY - UNHAS MAK
YB8ZD>ID>UI,C,F0:
MailBOX & GATEWAY - UNHAS MAK

Personal data

Call: YB8EIP OK

Name: Sulwan Cancel

Log file: MixW2.log ...

QTH: Makassar - Indonesia

Lat: -5.16667 Long: 119.417

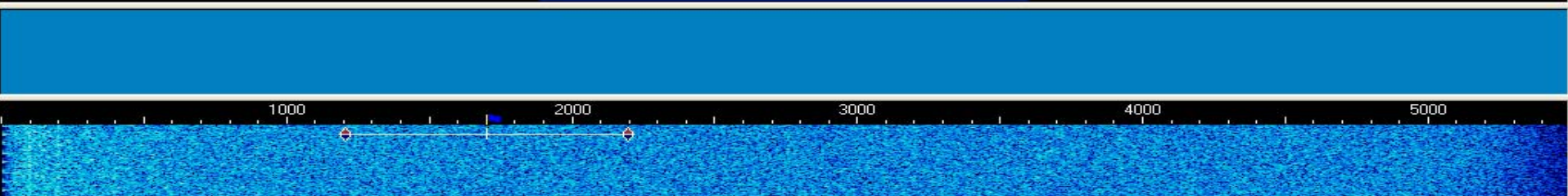
Grid: QI94RU IOTA:

Domain (state): Indonesia County: Sulsel

☐ Use CWID ☒ Fast ☐ Slow

CWID: de sk

Di isi sesuai Grid
Locator Station Anda



Disconnected DCD AFC Lock Snap 1700.0 Hz 1200 baud PACKET 07/16/2007 15:41:40 z

start E:\WORKSHOP_M... Packet Radio.ppt Sejarah Amateur R... YB8EIP - Current lo... 10:41 PM

Sulwan Dase-YB8EIP

MDC: Packet Radio

19



Setting Configure: PTT Transceiver

YB8EIP - Current log: MixW2.log - MixW

File Edit Mode Options View Configure Help

AutoCQ CQ QRZ?

QSO	Mode	Freq	Date
42	BPSK31	14070.500	05/12
43	BPSK31	7039.490	06/09
44	BPSK31	14070.700	06/15
45	PACKET	144149.000	07/16

YB8ZD>ID>UI,C,F

MailBOX & GATEW

YB8ZD>ID>UI,C,F

MailBOX & GATEW

VHF>MAIL>UI,C,F

Mail for: YC8DG O

YB8ZD>ID>UI,C,F

MailBOX & GATEW

YB8ZD>ID>UI,C,F

MailBOX & GATEW

VHF>MAIL>UI,C,F

Mail for: YC8DG O

Personal Data...
Interface language...

Default macros...
Macros for this mode...
Macros for this contest...
✓ Merge macros

Text colors...
Fonts

Disable CAT

TRCVR CAT/PTT...

LPT port settings...

Secondary PTT port

FSK port

WinKey port

TNC emulation...

Rotor

Disable sound device

Sound device settings...

Output volume...

Input volume...

TNC settings...

Markers...

Callbook...

✓ Use WAE country list

Clear TX RX << >>

name	QTH	RST_Sen
AM	PALEMBANG	599
toru	Tokyo-PM95pk	599
	on37kt	599
		599

YB8ZD>ID>UI,C,F

MailBOX & GATEW

YB8ZD>ID>UI,C,F

MailBOX & GATEW

VHF>MAIL>UI,C,F

Mail for: YC8DG O

YB8ZD>ID>UI,C,F

MailBOX & GATEW

YB8ZD>ID>UI,C,F

MailBOX & GATEW

VHF>MAIL>UI,C,F

Mail for: YC8DG O

YB8ZD>ID>UI,C,F

MailBOX & GATEW

Eq: 144.149.000

0 copy % 100

0 | s/n | 60

RST: 599 0 | i | m | -40

YB8ZD>ID>UI,C,F

MailBOX & GATEW

YB8ZD>ID>UI,C,F

MailBOX & GATEW

VHF>MAIL>UI,C,F

Mail for: YC8DG O

YB8ZD>ID>UI,C,F

MailBOX & GATEW

YB8ZD>ID>UI,C,F

MailBOX & GATEW

VHF>MAIL>UI,C,F

Mail for: YC8DG O

YB8ZD>ID>UI,C,F

MailBOX & GATEW

YB8ZD>ID>UI,C,F

MailBOX & GATEW

VHF>MAIL>UI,C,F

Mail for: YC8DG O

Click Tab

1000 2000 3000 4000 5000

Disconnected DCD AFC Lock Snap 1700.0 Hz 1200 baud PACKET 07/16/2007 15:44:13 z

start E:\WORKSHOP_M... Packet Radio.ppt Sejarah Amateur R... YB8EIP - Current lo... 10:44 PM



Setting Configure: PTT Transceiver

YB8EIP - Current log: MixW2.log - MixW

File Edit Mode Options View Configure Help

AutoCQ CQ QRZ? Call CALL2 INFO Bye Clear TX RX << >>

Eq: 144.149.000

QSO	Mode	Freq	Date	UTC	Call	Name	QTH	RST_Sen
42	BPSK31	14070.500	05/12/2007	16:46:23	YB4IR	IMAM	PALEMBANG	599
43	BPSK31	7039.490	06/09/2007	11:43:08	JA1SCW	Set		
44	BPSK31	14070.700	06/15/2007	11:45:50	JT1DN			
45	PACKET	144149.000	07/16/2007	15:46:05				

YB8ZD>ID>UI,C,F0:
MailBOX & GATEWAY - UNHAS MAK
YB8ZD>ID>UI,C,F0:
MailBOX & GATEWAY - UNHAS MAK
VHF>MAIL>UI,C,F0:
Mail for: YC8DG ORARI YB8EW YC8
YB8ZD>ID>UI,C,F0:
MailBOX & GATEWAY - UNHAS MAK
YB8ZD>ID>UI,C,F0:
MailBOX & GATEWAY - UNHAS MAK
VHF>MAIL>UI,C,F0:
Mail for: YC8DG ORARI YB8EW YC8

PTT & CAT

CAT: None

PTT & CAT Interface

COM1 (1200)

☐ Save frequency on exit ☐ Display zero beat frequency

☒ PTT via CAT command

☒ CW via CAT command

☒ CW via soundcard

☐ CW is LSB

☐ AFSK in place of FSK

DIG (Yaesu) is: LSB

CW pitch: 800 Hz

FSK center fq: 2210 Hz

Default digi mode: FSK

☒ Mouse wheel for tuning Sensitivity, Hz/tick: 500

Cat correction (Hz)

Global: 0

USB: 0

LSB: 0

CW: 0

Digi: 0

TX to RX: 0

Pilihan Com-Port

Click kotak pilihan



TNC Setting

YB8EIP - Current log: MixW2.log - MixW

File Edit Mode Options View Configure Help

AutoCQ CQ QRZ? Call CALL2 INFO Bye Clear TX RX << >>

QSO	Mode	Freq	Date	UTC	Call	Name	QTH	RST_Sen
42	BPSK31	14070.500	05/12/2007	16:46:23	YB4IR	IMAM	PALEMBANG	599
43	BPSK31	7039.490	06/09/2007	11:43:08	JA1SCW	Setoru	Tokyo-PM95pk	599
44	BPSK31	14070.700	06/15/2007	11:45:50	JT1DN		on37kt	599
45	PACKET	144149.000	07/16/2007	15:49:44				599

Eq: 144.149.000

0 copy % 100

0 | s/n | 60

RST: 599 0 | i | m | -40

YB8ZD>ID>UI,C,F0:
MailBOX & GATEWAY - UNHAS MAK
YB8ZD>ID>UI,C,F0:
MailBOX & GATEWAY - UNHAS MAK
VHF>MAIL>UI,C,F0:
Mail for: YC8DG ORARI YB8EW YC8
YB8ZD>ID>UI,C,F0:
MailBOX & GATEWAY - UNHAS MAK
VHF>MAIL>UI,C,F0:
Mail for: YC8DG ORARI YB8EW YC8
YB8ZD>ID>UI,C,F0:
MailBOX & GATEWAY - UNHAS MAK

Serial port

Port: COM1

Baud rate: 1200

Data bits: 8

Parity: None

Stop bits: 1

RTS: Always On

DTR: Always Off

☐ Echo

☒ Disable device

☐ Hardware flow control

OK Cancel

Normalnya selalu
"Disable device"



Disconnected DCD AFC Lock Snap 1700.0 Hz 1200 baud PACKET 07/16/2007 15:49:44 z

start E:\WORKSHOP_MD... Packet Radio.ppt Sejarah Amateur Ra... YB8EIP - Current log... 10:49 PM



Setting Volume Output:

Atur level volume output agar diperoleh hasil transmisi yang bagus.

YB8EIP - Current log: MixW2.log - MixW

File Edit Mode Options View Configure Help

AutoCQ CQ QRZ? Call CALL2 INFO Bye Clear TX RX << >>

Eq: 144.149.000

QSO	Mode	Freq	Date	UTC	Call	Name	QTH	RST_Sen
42	BPSK31	14070.500	05/12/2007	16:46:23	YB4IR	IMAM	PALEMBANG	599
43	BPSK31	7039.490	06/09/2007	11:43:08	JA1SCW	Setoru	Tokyo-PM95pk	599
44	BPSK31	14070.700	06/15/2007	11:45:50	IT1DN		ep37kt	599

0 copy % 100
0 | s/n | 60

Master Volume

Options Help

Master Volume Wave MIDI Line Microphone CD Audio Aux Phone

Balance: [Slider] [Speaker Icon]

Volume: [Slider]

☐ Mute all

☐ Mute

☐ Mute

☐ Mute

☐ Mute

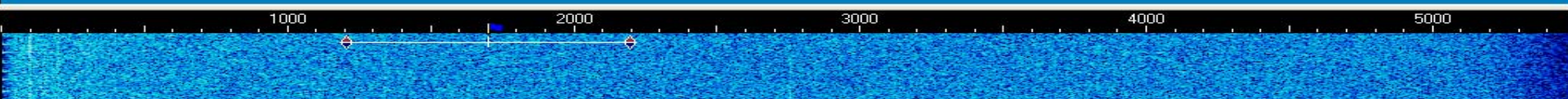
☐ Mute

☐ Mute

☐ Mute

ALI Audio Wave

Pengatur volume output



Disconnected DCD AFC Lock Snap 1700.0 Hz 1200 baud PACKET 07/16/2007 15:52:12 z

start E:\WORKSHO... Packet Radio... Sejarah Amat... YB8EIP - Curr... Master Volume 10:52 PM



Setting Volume Input

YB8EIP - Current log: MixW2.log - MixW

File Edit Mode Options View Configure Help

AutoCQ CQ QRZ? Call CALL2 INFO Bye Clear TX RX << >>

Eq: 144.149.000

QSO	Mode	Freq	Date	UTC	Call	Name	QTH	RST_Sen
42	BPSK31	14070.500	05/12/2007	16:46:23	YB4IR	IMAM	PALEMBANG	599
43	BPSK31	7039.490	06/09/2007	11:43:08	JA1SCW	Setoru	Tokyo-PM95pk	599
44	BPSK31	14070.700	06/15/2007	11:45:50	IT1DN		on37kt	599

Recording Control

Options Help

Recording Line In Microphone CD Audio Aux Phone

Balance: Volume: ☐ Mute all

Balance: Volume: ☐ Select

Balance: Volume: ☒ Select

Balance: Volume: ☐ Select

Balance: Volume: ☐ Select

Balance: Volume: ☐ Select

ALI Audio Wave

1000 2000 3000 4000 5000

Disconnected DCD AFC Lock Snap 1700.0 Hz 1200 baud PACKET 07/16/2007 15:54:28 z

start E:\WORKSHO... Packet Radio... Sejarah Amat... YB8EIP - Curr... Recording Co... 10:54 PM

Select Microphone
atau Line-in sesuai
dengan input pilihan
pada soundcard anda



Koneksi Dengan Gateway Packet Radio UNHAS

YB8EIP - Current log: MixW2.log - MixW

File Edit Mode Options View Configure Help

AutoCQ

SSB
AM
FM
CW
BPSK31
QPSK31
FSK31
RTTY
Packet
Pactor
AmTOR
MFSK
Throb
MT63
Hellschreiber
Fax
SSTV
OLIVIA

Inverted
Mode settings...
Character encoding for this mode ▶
Output amplitude for this mode...
Connect...
Disconnect
Additional modes ▶
Additional modes settings...
TNC modes ▶
TNC modes settings...

INFO Bye Clear TX RX << >>

Call	Name	QTH	RST_Sen
YB4IR	IMAM	PALEMBANG	599
JA1SCW	Setoru	Tokyo-PM95pk	599
JT1DN		on37kt	599
			599

Eq: 144.149.000

0 copy % 100
0 | s/n | 60
RST: 599 0 | i | m | -40

Click Tab Mode, kemudian click kiri mouse pada tab Connection

1000 2000 3000 4000 5000

Disconnected DCD AFC Lock Snap 1700.0 Hz 1200 baud PACKET 07/16/2007 15:59:00 z

start E:\WORKSHOP_MDC... Packet Radio.ppt YB8EIP - Current log:...



Koneksi Dengan Gateway Packet Radio UNHAS

YB8EIP - Current log: MixW2.log - MixW

File Edit Mode Options View Configure Help

AutoCQ CQ QRZ? Call CALL2 INFO Bye Clear TX RX << >>

QSO	Mode	Freq	Date	UTC	Call	Name	QTH	RST_Sen
42	BPSK31	14070.500	05/12/2007	16:46:23	YB4IR	IMAM	PALEMBANG	599
43	BPSK31	7039.490	06/09/2007	11:43:08	JA1SCW	Setoru	Tokyo-PM95pk	599
44	BPSK31	14070.700	06/15/2007	11:45:50	JT1DN		on37kt	599
45	PACKET	144149.001	07/16/2007	16:00:08				599

Eq: 144.149.000



0 copy % 100
0 | s/n | 60
RST: 599 0 | i | m | -40

Callsign anda

Connect to...

MyCall YB8EIP

☒ Try all SSIDs in MyCall

Digis

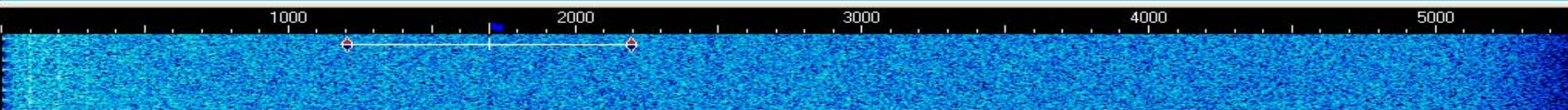
Remote UNHAS

Connect

Cancel

Click **Connect**
Untuk memulai
koneksi

Callsign Gateway
atau station tujuan



Disconnected DCD AFC Lock Snap 1700.0 Hz 1200 baud PACKET 07/16/2007 16:00:08 z



Koneksi Dengan Gateway Packet Radio UNHAS

YB8EIP - Current log: MixW2.log - MixW

File Edit Mode Options View Configure Help

AutoCQ CQ QRZ? Call CALL2 INFO Bye Clear TX RX << >>

QSO	Mode	Freq	Date	UTC	Call	Name	QTH	RST_Sen
42	BPSK31	14070.500	05/12/2007	16:46:23	YB4IR	IMAM	PALEMBANG	599
43	BPSK31	7039.490	06/09/2007	11:43:08	JA1SCW	Setoru	Tokyo-PM95pk	599
44	BPSK31	14070.700	06/15/2007	11:45:50	JT1DN		on37kt	599
45	PACKET	144149.001	07/16/2007	16:04:15				599

64 [Icon] [Icon] [Icon] [Icon]

Eq: 144.149.000



0 copy % 100
0 | s/n | 60
RST: 599 0 | i | m | -40

*** CONNECTED.
[JNOS-1.10b-IHM\$]

Welcome Sulwan,
to the YB8ZD TCP/IP Mailbox (JNOS 1.10b (8088)(ka9scf/ct)).
Currently 1 user.

Perlu penuntun ?? --> silahkan ketik " HELP "

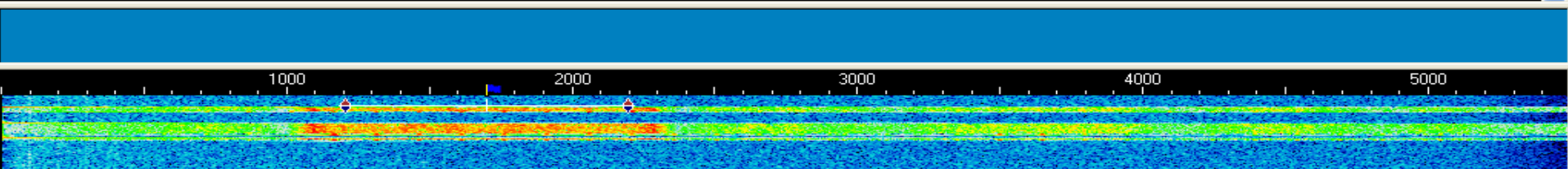
You have 0 messages.

YB8ZD Area: yb8eip Current msg# 0.

WA7V,DXC,DXC1,CONF,FBB,MDC,PESAN,BACABIO,ISIBIO,HUMOR,STORY,TIPS,SALE,RELIGI,INFO,?,A,
B,C,CONV,D,E,F,H,I,IH,IP,J,K,L,M,O,P,PI,R,S,T,U,V,W,X,Z >

Tampilan awal
saat koneksi

Pilihan menu





Koneksi Ke Station WA7V Walla-Walla Washington

YB8EIP - Current log: MixW2.log - MixW

File Edit Mode Options View Configure Help

AutoCQ

CQ

QRZ?

Call

CALL2

INFO

Bye

Clear

TX

RX

<<

QSO	Mode	Freq	Date	UTC	Call	Name	QTH	R
42	BPSK31	14070.500	05/12/2007	16:46:23	YB4IR	IMAM	PALEMBANG	5
43	BPSK31	7039.490	06/09/2007	11:43:08	JA1SCW	Setoru	Tokyo-PM95pk	5
44	BPSK31	14070.700	06/15/2007	11:45:50	JT1DN		on37kt	5
45	PACKET	144149.000	07/16/2007	16:07:53				5

60

You have 0 messages.

YB8ZD Area: yb8eip Current msg# 0.

WA7V,DXC,DXC1,CONF,FBB,MDC,PESAN,BAC
B,C,CONV,D,E,F,H,I,IH,IP,J,K,L,M,O,P,PI
wa7v

Trying 192.147.172.251:telnet... The escape character is: CTRL-T
*** connected to 192.147.172.251:telnet

KA9Q NOS - KO4KS-TNOS/Unix v2.42/ELF (wa7v.ampr.org)

ALWGW telnet access

login: yb8eip

Password:

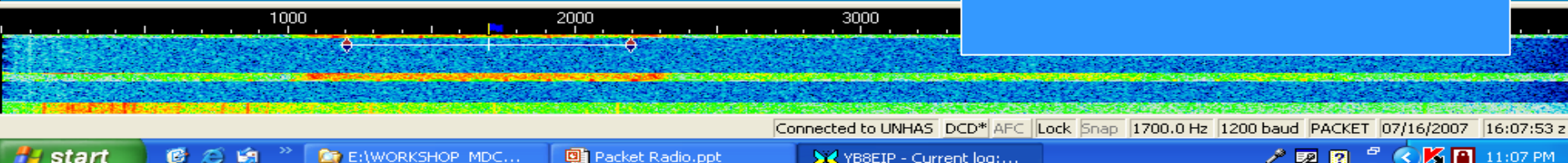
Dari Gateway Packet Radio
UNHAS, anda dapat melakukan
koneksi ke Gateway Walla-walla di
Washington (WA7V)

Dengan melakukan telnet ke WA7V
dengan perintah:

t 192.147.172.251

Atau ketik WA7V - ENTER

Saat awal koneksi, anda
harus melakukan Registrasi.
Login: ketik Callsign anda
Password: nama atau enter





Koneksi Ke Station WA7V Walla-Walla Washington

YB8EIP - Current log: MixW2.log - MixW

File Edit Mode Options View Configure Help

AutoCQ CQ QRZ? Call CALL2 INFO Bye Clear TX RX << >>

QSO	Mode	Freq	Date	UTC	Call	Name	QTH	RST_Sen
42	BPSK31	14070.500	05/12/2007	16:46:23	YB4IR	IMAM	PALEMBANG	599
43	BPSK31	7039.490	06/09/2007	11:43:08	JA1SCW	Setoru	Tokyo-PM95pk	599
44	BPSK31	14070.700	06/15/2007	11:45:50	JT1DN		on37kt	599
45	PACKET	144149.001	07/16/2007	16:11:40				599

Eq: 144.149.000



RST: 599

0 copy % 100

0 | s/n | 60

0 | i | m | -40

[TNOS-2.42-BFHIMW\$]

ALWGW ==> ALW GateWay: Walla Walla, Washington, USA 

Current status and news at <http://wa7v.com/>

Access AXIP/NETROM ==> ALWGW:WA7V-8

TELNET ==> gw.wa7v.com (192.147.172.251)

==> wa7v.ampr.org (44.12.3.128 - only from 44.x)

Welcome Sulwan, to the WA7V Gateway Node/BBS

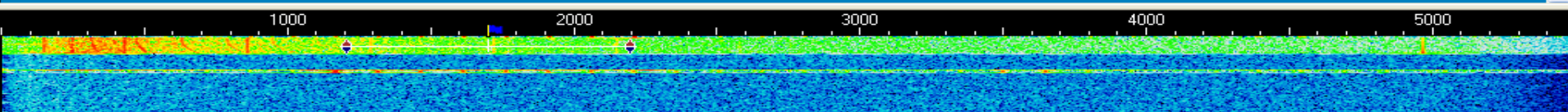
Last on the BBS: Mon Jul 16 05:49:21 2007

3 users on the BBS

Quote of the Day:

Fortune's Real-Life Courtroom Quote #41:

Tampilan saat anda
sudah terkoneksi
dengan station
Gateway Walla-walla di
Washington-USA



Connected to UNHAS DCD AFC Lock Snap 1700.0 Hz 1200 baud PACKET 07/16/2007 16:11:40 z

start

E:\WORKSHOP_MDC...

Packet Radio.ppt

YB8EIP - Current log:...

11:11 PM



Koneksi Ke Station WA7V Walla-Walla Washington

YB8EIP - Current log: MixW2.log - MixW

File Edit Mode Options View Configure Help

AutoCQ CQ QRZ? Call CALL2 INFO Bye Clear TX RX << >>

QSO	Mode	Freq	Date	UTC	Call	Name	QTH	RST_Sen
42	BPSK31	14070.500	05/12/2007	16:46:23	YB4IR	IMAM	PALEMBANG	599
43	BPSK31	7039.490	06/09/2007	11:43:08	JA1SCW	Setoru	Tokyo-PM95pk	599
44	BPSK31	14070.700	06/15/2007	11:45:50	JT1DN		on37kt	599
45	PACKET	144149.000	07/16/2007	16:18:41				599

Eq: 144.149.000



0 copy % 100
0 | s/n | 60
RST: 599 0 | i | m | -40

Message-Id: 45955WA7V
From: "Gatot Dewanto - YE1GD" <tod.ye1gd@gmail.com>
Date: Tue, 17 Jul 2007 16:56:02 +0700
Subject: RE: [orari-news] kemana orda Jabar ?
Reply-To: orari-news@yahoogroups.com

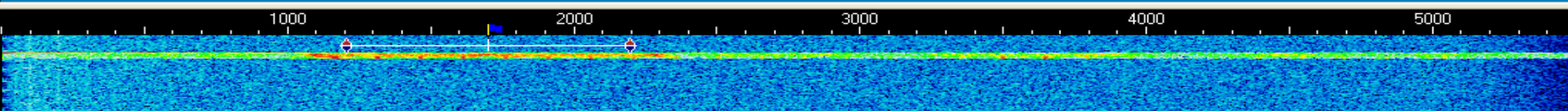
--eqWghPwHRKGRUmYPCGpxunvcr0nrnESyR9MR5LP
Content-Type: text/plain; charset=ISO-8859-1
Content-Transfer-Encoding: quoted-printable

Sedih, tapi jadi terhibur karena ketemu DQT

=20

2

Membaca surat elektronik
(email) pada kotak surat
(mail-box)



Connected to UNHAS DCD AFC Lock Snap 1700.0 Hz 1200 baud PACKET 07/16/2007 16:18:41 z



Membaca eMail WA7V

Anda harus berlangganan dengan salah satu mailing list
misal: orari-news@yahoogroups.com

YB8EIP - Current log: MixW2.log - MixW

File Edit Mode Options View Configure Help

AutoCQ CQ QRZ? Call CALL2 INFO Bye Clear TX RX << >>

QSO	Mode	Freq	Date	UTC	Call	Name	QTH	RST_Sen
42	BPSK31	14070.500	05/12/2007	16:46:23	YB4IR	IMAM	PALEMBANG	599
43	BPSK31	7039.490	06/09/2007	11:43:08	JA1SCW	Setoru	Tokyo-PM95pk	599
44	BPSK31	14070.700	06/15/2007	11:45:50	JT1DN		on37kt	599
45	PACKET	144149.000	07/16/2007	16:14:43				599

Eq: 144.149.000



RST: 599

0 copy % 100

0 | s/n | 60

0 | i | m | -40

ALWGW:WA7V-8 Area: 'yb8eip' Current msg# 1 of 37.

? ,A,B,C,CALL,CONF,F,FLEX,J,K,L,N,NR,P,PNW,R,S,T,TELPAC,TUTOR,V,WX,X,XNET>

Mail area: yb8eip 37 messages - 35 new

Daftar Mail dalam mail-box

Stat # TO FROM DATE SIZE SUBJECT

> N 1 yb8eip@wa7v.# tonnysap 16 Jul 16299 KOM-TEK lebih download dari FT
N 2 yb8eip@wa7v.# nicky_ly 15 Jul 16789 [orari-news] Re: yang terlupakan di
N 3 yb8eip@wa7v.# indrasep 15 Jul 20939 Re: [orari-news] yang terlupakan d
N 4 yb8eip@wa7v.# firmanel 16 Jul 16641 KOM-TEK Mohon bantuan mengatasi Em
N 5 yb8eip@wa7v.# gunarso 16 Jul 23143 RE: [orari-news] yang terlupakan d
N 6 yb8eip@wa7v.# ariefnur 15 Jul 18585 Re: KOM-TEK Re: Multi Users And Mu
N 7 yb8eip@wa7v.# indrayan 16 Jul 18390 Re: KOM-TEK DATA HILANG SAAT FORMA
N 8 yb8eip@wa7v.# sardjana 16 Jul 18362 Re: [orari-news] Re: yang terlupaka
N 9 yb8eip@wa7v.# myubesti 16 Jul 20143 KOM-TEK Re: Multi Users And Multi

1000 2000 3000 4000 5000

Connected to UNHAS DCD AFC Lock Snap 1700.0 Hz 1200 baud PACKET 07/16/2007 16:14:43 z

start



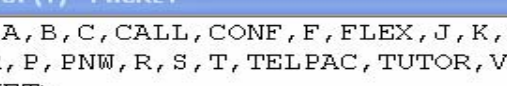
E:\WORKSHOP_MDC...

Packet Radio.ppt

YB8EIP - Current log:...



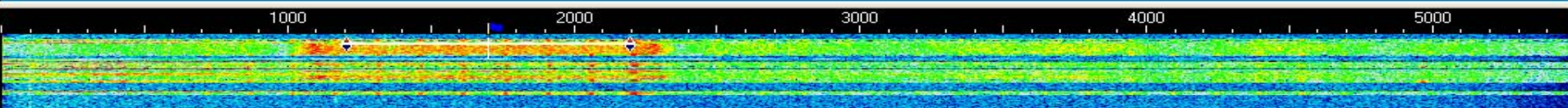
11:14 PM



The screenshot shows a radio interface with a blue title bar that reads "RX (1) - PACKET". Below the title bar is a list of packet identifiers: "? , A , B , C , CALL , CONF , F , FLEX , J , K , L , N , NR , P , PNW , R , S , T , TELPAC , TUTOR , V , WX , X , XNET>". Below this list is a text input field containing "VHF>YC8HW>RR2 , P". At the bottom of the interface, there is a status bar with the text "RST: 599" and a frequency display "0 | i | m | -40".

= 20

s subscribe-orari-news@yahoogroups.com





Ngobrol di “Worldwide Conference” Dengan Mode Packet Radio

YB8EIP - Current log: MixW2.log - MixW

File Edit Mode Options View Configure Help

AutoCQ CQ QRZ? Call CALL2 INFO Bye Clear TX RX << >>

QSO	Mode	Freq	Date	UTC	Call	Name	QTH	RST_Sen
42	BPSK31	14070.500	05/12/2007	16:46:23	YB4IR	IMAM	PALEMBANG	599
43	BPSK31	7039.490	06/09/2007	11:43:08	JA1SCW	Setoru	Tokyo-PM95pk	599
44	BPSK31	14070.700	06/15/2007	11:45:50	JT1DN		on37kt	599
45	PACKET	144149.000	07/16/2007	16:28:40				599

60 [Icons] [Icons]

? , A , B , C , CALL , CONF , F , FLEX , J , K , L , N , NR , P , PNW , R , S , T , TELPAC , TUTOR , V

*** Message from yc8hw at 08:23 ...

*** Please type 'CONF 1945' to join conference channel 1945.

conf

*** TNOS Conference @ ALW-QSO Type /HELP for help.

*** There are 118 users online

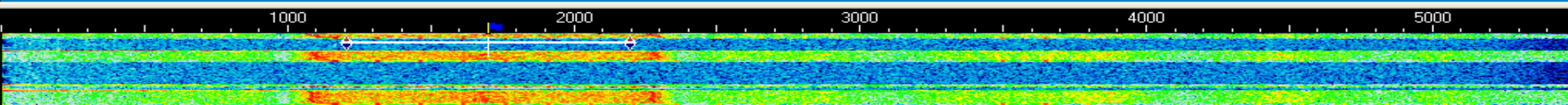
*** There are 22 groups available

*** yb8eip signed on at 08:26.

*** Now on Channel 14 (1 user).

Welcome to the ALW-QSO worldwide conference bridge in Wan...

conf
/



Connected to UNHAS DCD AFC Lock Snap 1700.0 Hz 1200 baud PACKET 07/16/2007 16:28:41 z

start [Icons] E:\WORKSHOP_MDC... Packet Radio.ppt YB8EIP - Current log:...

11:28 PM

Bila anda sudah terkoneksi dengan Gateway UNHAS atau Walla-walla, ketik **Conf** dan ikuti perintah selanjutnya pada layar monitor. Tampilan saat anda telah bergabung di conference internasional



Chating di Conference Internasional

YB8EIP - Current log: MixW2.log - MixW

File Edit Mode Options View Configure Help

AutoCQ CQ QRZ? Call CALL2 INFO Bye Clear TX RX << >>

QSO	Mode	Freq	Date	UTC	Call	Name	QTH	RST_Sen
42	BPSK31	14070.500	05/12/2007	16:46:23	YB4IR	IMAM	PALEMBANG	599
43	BPSK31	7039.490	06/09/2007	11:43:08	JA1SCW	Setoru	Tokyo-PM95pk	599
44	BPSK31	14070.700	06/15/2007	11:45:50	JT1DN		on37kt	599
45	PACKET	144149.001	07/16/2007	16:31:15				599

6 7 X F

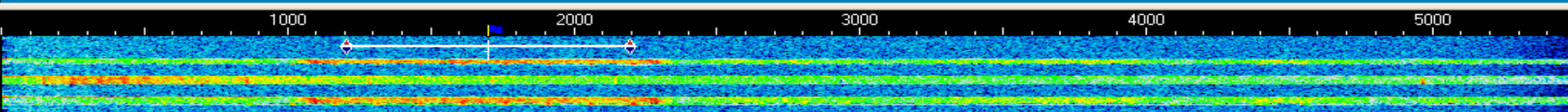
RX (1) - PACKET

YB8ZD>ID>UI,C,F0:
MailBOX & GATEWAY - UNHAS MAKASSAR
->> Adm-YC8HW <<-

RST: 599 0 | i | m | -40

0 yv5eu dl2gg
7 dj9gb df8tx
11 CATerham RADio Group; all welcome!!!
g8mny g6dtw g4apl
14 yb8eip
25 dj2ub
55 AVR
g0twn9 g0ras
97 Northern California. Packet Radio.
ke6i ke6i-1 wh6io
99 cs1sel cs1sel cs1sel cs1sel cs1sel cs1sel cs1sel cs1sel cs1sel
cs1sel cs1sel cs1sel cs1sel cs1sel cs1sel cs1sel cs1sel cs1sel
cs1sel cs1sel cs1sel cs1sel cs1sel cs1sel cs1sel cs1sel cs1sel
cs1sel cs1sel cs1sel cs1sel cs1sel cs1sel
115 Linux AX25 & IP Channel
m1cuk g7pun

Peserta Conference (Chat)
ditiap kanal



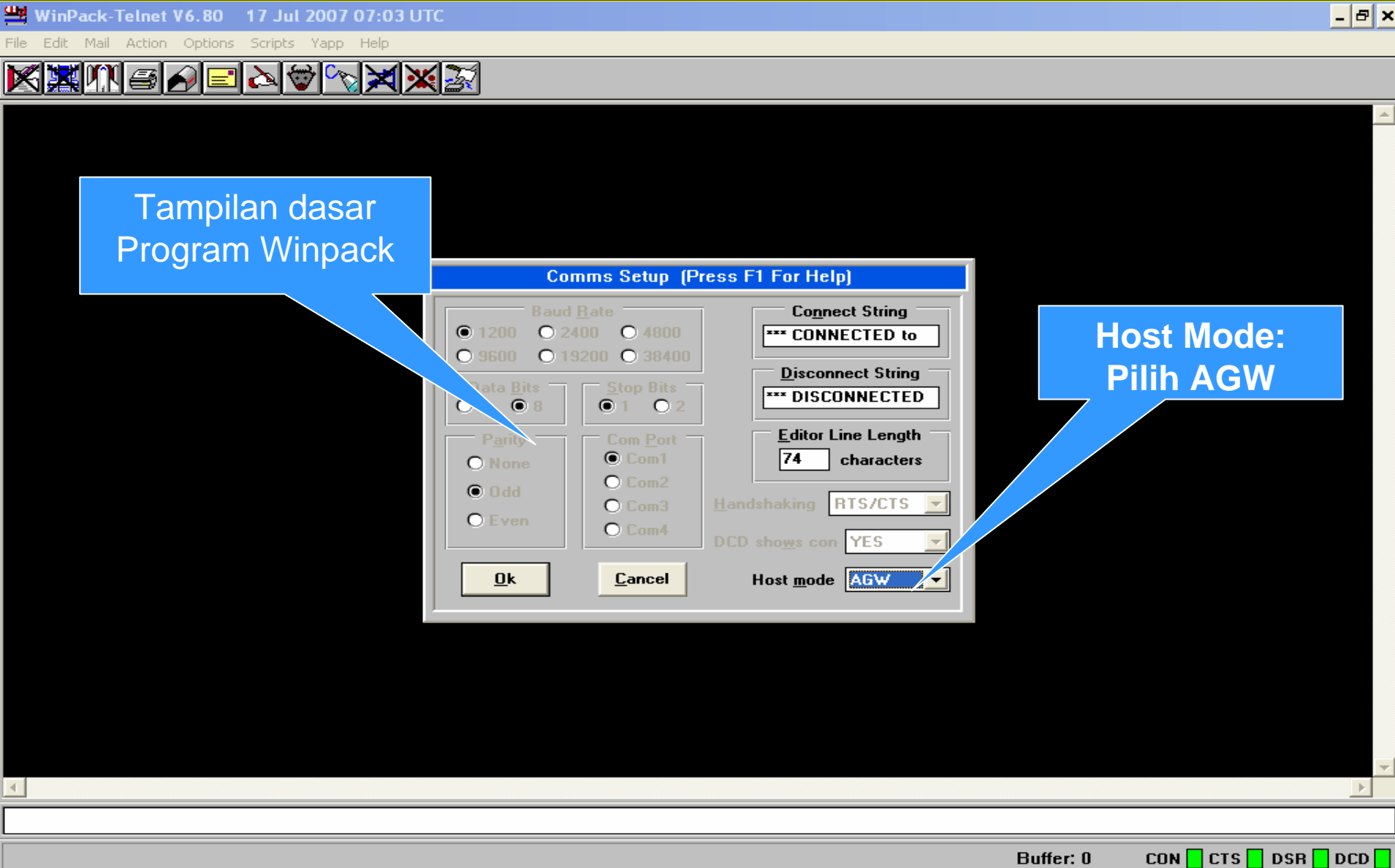
Packet Radio Dengan Program AGW - WinPack



Program AGW adalah
Packet Engine Bagi
Program WinPac

Packet Engine
Ver. 2004.1108
@SV2AGW 1991-2004

Packet Radio Dengan AGW-WinPack



Multi Kanal Pada WinPac-AGW

Multi-channel Terminal 17 Jul 2007 07:05 UTC

File Options Window

1 2 3 4 5 6 7 8 9 10 0

1: Fm YB8ZD To ID <UI pid=F0 Len=52 >[07:05:00]
MailBOX & GATEWAY - UNHAS MAKASSAR ->> Adm-YCBHW <<-

2: Fm YB8ZD To ID <UI pid=F0 Len=52 >[07:05:00]
MailBOX & GATEWAY - UNHAS MAKASSAR ->> Adm-YCBHW <<-

cmd:

DISCONNECTED

Disconnect Pause

start E:\WORKSHOP_... Microsoft Power... WinPack-AGW V... Multi-channel Te... 7:05 AM

Dapat melayani QSO 10 kanal sekaligus

Koneksi Ke Gateway UNHAS

Multi-channel Terminal 17 Jul 2007 07:07 UTC

File Options Window

1 ☐ UNHAS ☒ 3 ☐ 4 ☐ 5 ☐ 0 1 2 3 4 5
6 ☐ 7 ☐ 8 ☐ 9 ☐ 10 ☐ 6 7 8 9 10

```
2:Fm UNHAS To YB8EIP-2 <I R0 S0 pid=F0 Len=114 >[07:06:41]
IJNOS-1.10b-IHM$}
Welcome Sulwan,
to the YB8ZD TCP/IP Mailbox (JNOS 1.10b (8088)(ka9scf/ct)).
Currently 1 user.

1:Fm UNHAS To YB8EIP-2 <I R0 S1 pid=F0 Len=48 >[07:06:41]
Perlu penuntun ?? --> silahkan ketik " HELP "

2:Fm UNHAS To YB8EIP-2 <I R0 S1 pid=F0 Len=48 >[07:06:41]
Perlu penuntun ?? --> silahkan ketik " HELP "

1:Fm YB8EIP-2 To UNHAS <RR R2 >[07:06:46]
1:Fm UNHAS To YB8EIP-2 <I R0 S2 pid=F0 Len=200 >[07:06:49]
You have 0 messages.
YB8ZD Area: yb8eip Current msg# 0.
WA7V,DXC,DXC1,CONF,FBB,MDC,PESAN,BACABIO,ISIBIO,HUMOR,STORY,TIPS,SALE,RELIGI,INFO,?,A,B,C,CONV,D,E,F,H,I,IH,IP,J,K,L,M,O,P,P

2:Fm UNHAS To YB8EIP-2 <I R0 S2 pid=F0 Len=200 >[07:06:49]
You have 0 messages.
YB8ZD Area: yb8eip Current msg# 0.
WA7V,DXC,DXC1,CONF,FBB,MDC,PESAN,BACABIO,ISIBIO,HUMOR,STORY,TIPS,SALE,RELIGI,INFO,?,A,B,C,CONV,D,E,F,H,I,IH,IP,J,K,L,M,O,P,P

1:Fm YB8EIP-2 To UNHAS <RR R3 >[07:06:53]
2:Fm YB8ZD To ID <UI pid=F0 Len=52 >[07:07:00]
MailBOX & GATEWAY - UNHAS MAKASSAR ->> Adm-YCBHW <<-
```

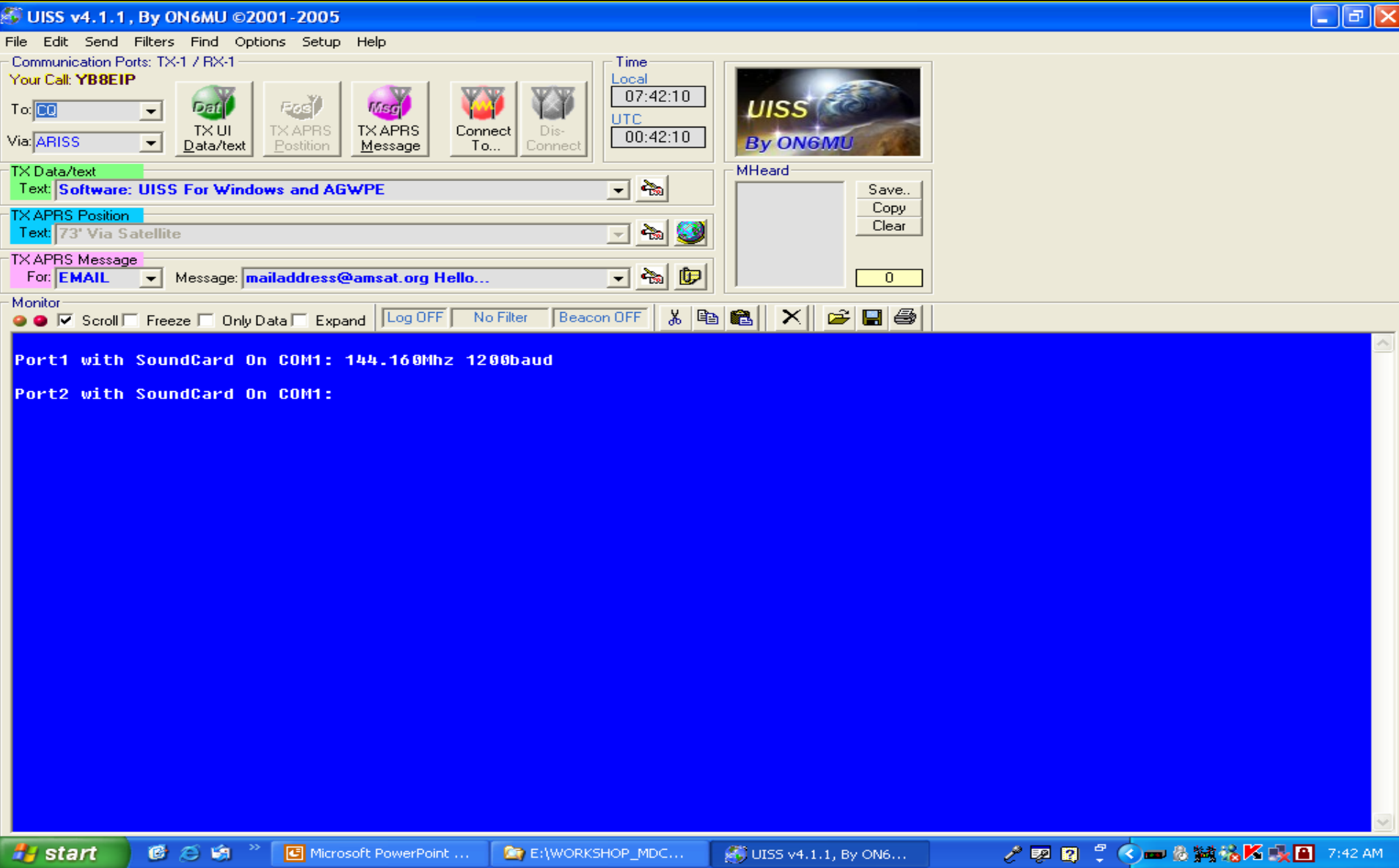
You have 0 messages.
YB8ZD Area: yb8eip Current msg# 0.
WA7V,DXC,DXC1,CONF,FBB,MDC,PESAN,BACABIO,ISIBIO,HUMOR,STORY,TIPS,SALE,RELIGI,INFO,?,A,B,C,CONV,D,E,F,H,I,IH,IP,J,K,L,M,O,P,P

UNHAS

Disconnect Pause

start E:\WORKSHOP_... Microsoft PowerP... WinPack-AGW V6... Multi-channel Ter... 7:07 AM

Packet Radio Dengan AGW - UISS





Tampilan UISS

UISS v4.1.1, By ON6MU ©2001-2005 ->UNHAS

File Edit Send Filters Find Options Setup Help

Communication Ports: TX-1 / RX-1
Your Call: YB8EIP

To: CQ
Via: ARISS

TX UI Data/text
TX APRS Position
TX APRS Message
Connect To...
Dis-Connect

Time
Local 07:43:32
UTC 00:43:32

UISS By ON6MU

MHeard
UNHAS
YB8ZD
YB8EIP
VHF

Save..
Copy
Clear

4

TX Data/text
Text: Software: UISS For Windows and AGWPE

TX APRS Position
Text: 73° Via Satellite

TX APRS Message
For: EMAIL
Message: mailaddress@amsat.org Hello...

Monitor

to the YB8ZD TCP/IP Mailbox (JNOS 1.10b) Currently 2 users.

Fm YB8EIP To UNHAS <RR P/F R1 >[07:43:22]
Perlu penuntun ?? --> silahkan ketik

Fm UNHAS To YB8EIP <I R0 S1 pid=F0 Len=46 >[07:43:22]
Perlu penuntun ?? --> silahkan ketik

YB8ZD Area: yb8eip Current msg# 0.
WA7U,DXC,DXC1,CONF,FBB,MDC,PESAN,BACABIO,ISIBIO,HUMOR,STORY,TIPS,SALE,RELIGI,INFO,?,A,B,C,CONU,D,E,F,H,I,IH,IP,J,K,L,M,O,P,PI,R,S,T,U,U,W,X,Z >

Fm UNHAS To YB8EIP <I R0 S2 pid=F0 Len=46 >[07:43:22]
You have 0 messages.
YB8ZD Area: yb8eip Current msg# 0.
WA7U,DXC,DXC1,CONF,FBB,MDC,PESAN,BACABIO,ISIBIO,HUMOR,STORY,TIPS,SALE,RELIGI,INFO,?,A,B,C,CONU,D,E,F,H,I,IH,IP,J,K,L,M,O,P,PI,R,S,T,U,U,W,X,Z >

Fm YB8EIP To UNHAS <RR R3 >[07:43:22]
Fm VHF To MAIL <UI pid=F0 Len=46 >[07:43:22]
Mail for: YC8DG ORARI YB8EW YC8CRN YB8EIP

Fm UNHAS To YB8EIP <RR P/F R0 >[07:43:22]
Fm YB8EIP To UNHAS <RR P/F R3 >[07:43:22]

Connected to UNHAS on Channel 1

Send Text 1 Send Text 2 Send Text 3 Send Text File... Options Copy Save... Print...

[JNOS-1.10b-IHM\$]
Welcome Sulwan,
to the YB8ZD TCP/IP Mailbox (JNOS 1.10b (8088)(ka9scf/ct)).
Currently 2 users.
Perlu penuntun ?? --> silahkan ketik " HELP "
You have 0 messages.
YB8ZD Area: yb8eip Current msg# 0.
WA7U,DXC,DXC1,CONF,FBB,MDC,PESAN,BACABIO,ISIBIO,HUMOR,STORY,TIPS,SALE,RELIGI,INFO,?,A,B,C,CONU,D,E,F,H,I,IH,IP,J,K,L,M,O,P,PI,R,S,T,U,U,W,X,Z >

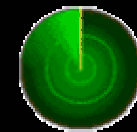
Prompt

Options
Disconnect
Note PMS1 PMS2

start Microsoft Power... E:\WORKSHOP... UISS v4.1.1, B... Connected to U... 7:43 AM



Pilihan Program



- Program mana yang paling bagus?
- Tiap program komputer untuk Packet Radio selalu mempunyai kelebihan masing-masing. Sepenuhnya pilihan ada pada anda.





YC8CRN sedang koneksi ke
Gateway Packet Radio UNHAS

YC8BBK

MDC'S

YC8CRN

MDC Crew In Action

10 7 2007



Peralatan Dasar Digimode



Interface Homebrew YB8EIP



Tuner HF Homebrew YB8EIP



9 7 2007

RUM FREKUENSI RADIO DENGAN THEMA
POSTEL DALAM MENGHADAPI TANTANGAN GLOBALISASI
Frekuensi Radio & Orbit Satelit Kelas II Makassar
sar Digimode Club (MDC) ORARIDA 8 SULSEL
Hotel Pantai Gapura Makassar, 10 Juli 2007



YB8EIP

YD8EHT

YB8EW

YC8CRN

10 7 2007



ORARI DAERAH 8 SULAWESI SELATAN MAKASSAR DIGIMODE CLUB – YB8ZD



Ada Pertanyaan?



ORARI DAERAH 8 SULAWESI SELATAN

MAKASSAR DIGIMODE CLUB – YB8ZD



Terima Kasih

TNX FR NICE QSO VIA MULTIMEDIA
HPE CU AGN de YB8EIP 73!